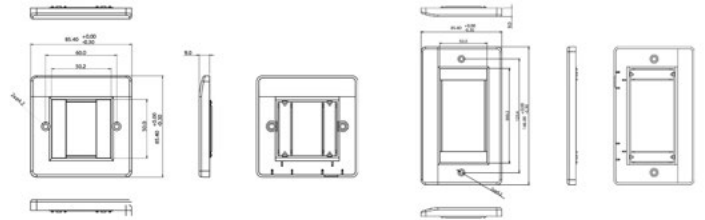


# CNET UK Style Curved Wallplate & Back Box



## QU50X50CURV

Single Gang Wallplate  
85x85mm



## QU100X50CURV

Double Gang Wallplate  
85x146mm



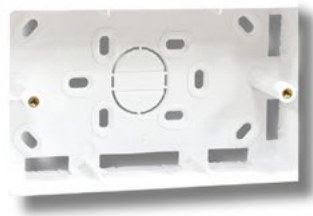
## BBM

Single Gang  
37mm Back Box (R=5mm)  
85x85mm



## BBTS

Double Gang  
37mm Back Box (R=5mm)  
85x146mm



## FEATURES

**SLEEK, MODERN DESIGN:** Smooth curved edges add a premium touch that elevates any wall space

**MODULAR COMPATIBILITY:** Fits standard 50mm x 25mm modules, allowing easy integration of your preferred data or AV components

**QUICK, NO-FUSS INSTALLATION:** Supplied with mounting screws for a fast, secure setup—ideal for pros and DIY users alike

**CUSTOMIZABLE PORT CONFIGURATION** (available in Single Gang or Double Gang formats to match your layout needs): Single Gang & Double Gang supports up to four jacks or shutters for flexible module arrangements

## OVERVIEW

**When style meets performance – designed to impress, built to last**

Transform your installations with the Curved Wallplate—where modern aesthetics meet real-world practicality. Whether you're upgrading a smart home, outfitting a sleek office, or cabling a commercial site, this face plate delivers a polished, professional finish every time. Its elegantly curved profile and integrated labeling fields bring order, clarity, and style to your network or AV setup—no clutter, just clean lines.

**Surface Back Box – Mount Anywhere, Anytime**

No recessed wall box? No problem. The included surface-mount back box attaches to any flat surface (drywall, concrete, wood, or partition)—making it the perfect solution when in-wall mounting isn't feasible.

Ideal for homes, offices, schools, and more. Engineered for flexibility. Designed for impact. The Curved Wallplate & Back Box kit brings style and simplicity to every installation.